



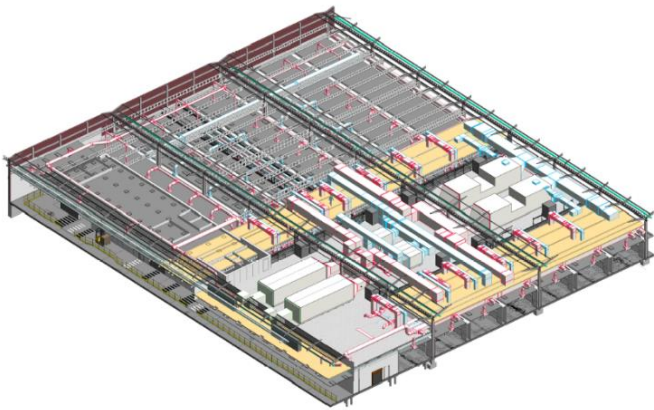
BES carried out the detailed design of a new 8130m² Packing Hall and associated plantrooms (1800m²). The Facility will be constructed within an existing low bay warehouse to accommodate sixteen packing lines.

DESIGN CASE STUDY NO 19

Global Packing Centre

- Principal Designer
- Structural, fit out and M&E design
- Fully integrated design solution
- Part L Compliance

As a Multidisciplinary organisation we were able to develop the client's outline brief into a fully coordinated design solution. Close liaison with specialist equipment suppliers was required throughout to ensure precise integration of complex packing lines within this qualified, Grade D facility.



Secondary Packing & Plant Deck

- Development from Concept/Basic through to Detail
- Detailed Planning Application Consultation and full Part L, Building Control submissions
- Detailed Temporary works design during Demolition.
- Structural design encompassing piling, pad foundations, slab and structural steel superstructure.
- Innovative Pre-fabrication techniques designed for the integration of the HVAC Ductwork, Pipework & Cable tray/containment systems within Pre-Fabricated Services modules.
- External Works – Slab & Drainage Design for HVAC Plant & Pre -Fabricated Hypoxic Plantroom(s).

- Area Classifications: Primary Packing ISO14644-1:2015 class 8 (Grade D), Secondary Packing CNC – Controlled Not Classified.
- Fire Strategy – Design, production of Layout & Reporting
- Replacement of the existing RWP system with Syphonic Roof drainage system & connection to existing below Ground drainage system.
- Fully integrated REVIT model production & co-ordination (BIM level 2-3) for Structure, Fitout & M&E services.
- Electrical, BMS & FMS design.



Primary Packing & Walk - On - Deck

Boulting Environmental Services Ltd

Maple House, Sandbrook Business Park, Rochdale OL11 1LQ
T: +44 (0)161 655 3344 F: +44 (0)161 655 3399 W: www.besltd.org

Exceeding Expectations

Part of Boulting Ltd

