



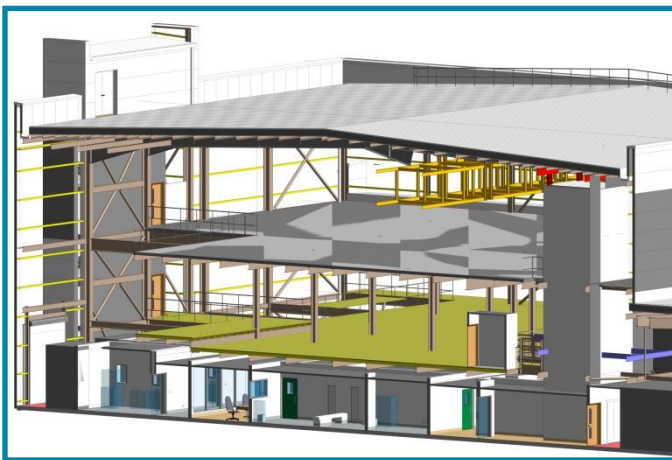
DESIGN CASE STUDY NO 11

Sterile Products Plant

- Aseptic Processing
- Greenfield site
- Innovative design initiatives
- Fully integrated design solution

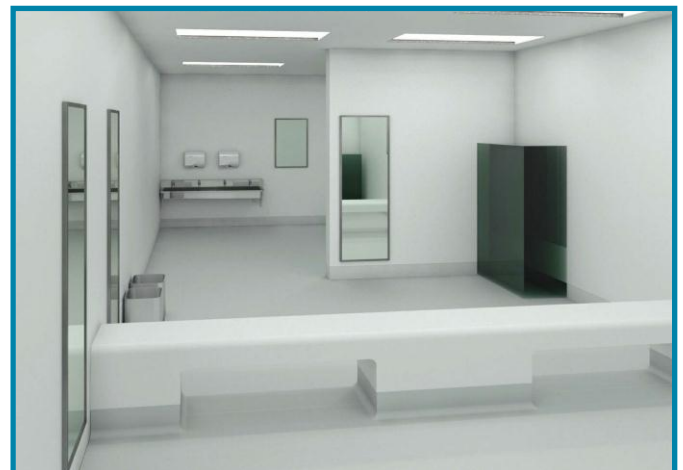
BES carried out the detailed design of a new £120m sterile products plant. The three storey building will house state of the art production equipment and will be finished to the most exacting specifications.

The production suite will be situated on the Ground Floor of a new 3 storey building with the other floors providing Technical Distribution and Plant space. All rooms and services are being designed to the highest specifications, with fully vinyled walls, floors and ceilings, complex environmental control and monitoring, and state of the art plant and equipment throughout. Water for Injection and Pure Steam are being derived from innovative combined generation plant.



- Development from Concept through to Detail
- Fully integrated shell, fit out & services modelling
- Accurate construction costs produced during concept
- Implementation of earned value progress reporting
- Detailed Construction schedules produced
- Full integration with Process Equipment specifiers.

- Detailed design of all HVAC, Electrical & Pure utilities.
- Highly specified architectural detailing
- CFD airflow modelling employed within HVAC design.
- Active pressure control throughout the suite.
- Complex dehumidification requirements.
- REVIT model coordination between structure and fit out.



Boulting Environmental Services Ltd

Maple House, Sandbrook Business Park Rochdale OL11 1LQ
T: +44 (0)161 655 3344 F: +44 (0)161 655 3399 W: www.besltd.org

Exceeding Expectations

Part of the Boulting Group Ltd

